

## STEP 1

Have the donor provide a specimen and return the cup to the collector.



## STEP 2

Replace and tighten the cap. Verify the temperature is within the range on the temperature strip. (90 - 100°F)(32 - 38°C)



## STEP 3

Remove the label to view the results.



## STEP 4

If equipped, place the adulteration card next to the adulterant strip on the cup. If any of the test pads match any of the colors on the left, adulteration is indicated.

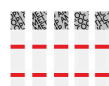
	Normal	Abnormal
OXI	Negative	
S.G.	1.003, 1.005, 1.015, 1.025	1.000, >1.35
pH	4.0, 7.0, 9.0	2.0, 3.0, 10.0, 11.0, 12.0
NIT	20mg/dl, Negative	50mg/dl, 100mg/dl
GLUT	Negative	
CREA	100mg/dl, 20mg/dl	0mg/dl, 0mg/dl

## STEP 5

Read the results when all upper "Control" or "C" lines have appeared. Negative results can be read as soon as all "Test" or "T" lines are visible. (Wait 5 minutes to determine a Positive Result)

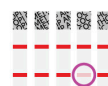
### INTERPRETING RESULTS

#### NEGATIVE



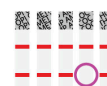
A negative result is indicated by the presence of the lower "Test" or "T" Line for each designated drug.

#### NEGATIVE



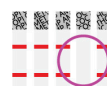
The presence of even a very light "Test" or "T" Line indicates a negative result.

#### POSITIVE



A positive result is indicated by the absence of the lower "Test" or "T" Line for a specific drug. Wait 5 minutes to determine a positive result.

#### INVALID



An invalid result is indicated by the absence of the upper "Control" or "C" Line and the lower "Test" or "T" Line for a specific drug. If this occurs run a second test.